

ACCESSORY FITMENT

Product

Isuzu Nudge bar

Part no.

1600062T, BS-1600062, BS-XRIDER-62



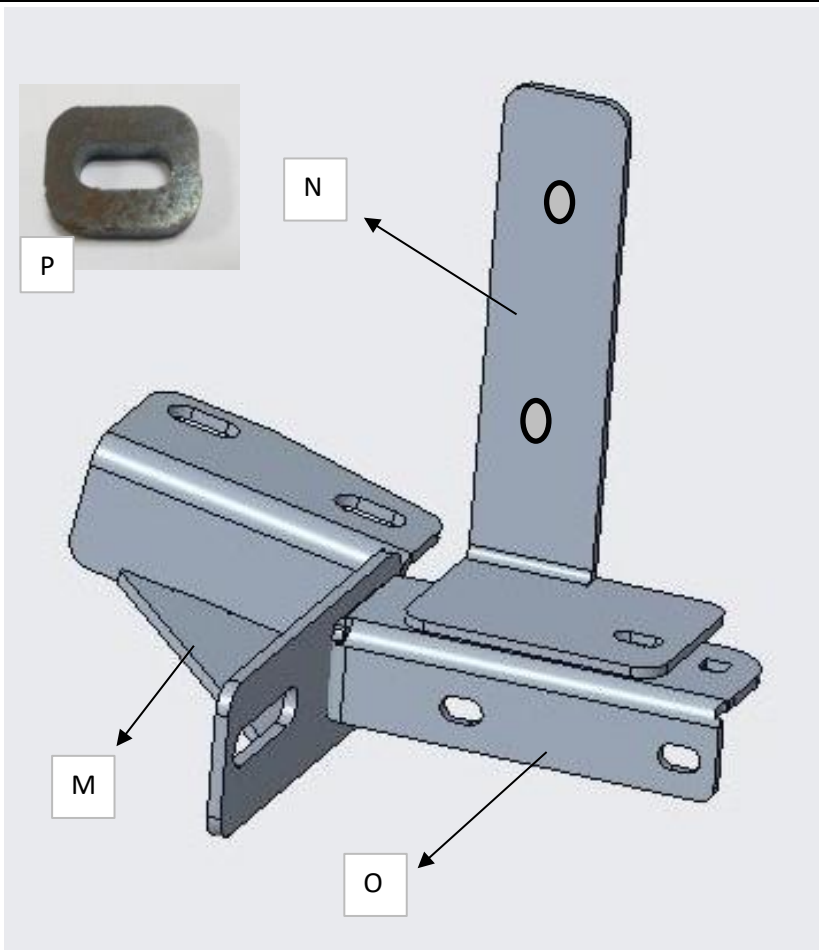
60
Minutes

Models :ALL

Page 1 of 1

Date :02/09/2020

DIAGRAM



Kit content:

	Qty	Description		Qty	Description
A	4	M10 x 30 sets	J	8	M8 x 22 x 1.6 flat washers
B	6	M8 x 30 sets	K	2	M8 hex nuts
C	2	M10 x 40 x 1.25 pitch sets	L	2	U-bolts
D	2	M10 x 30 x 1.25 pitch sets	M	2	Nudge bar bottom mount bracket
E	6	M8 spring washers	N	2	Chassis mount bracket
F	12	M10 spring washers	O	2	Nudge bar front mount bracket
G	6	M10 Hex nuts	P	2	Spacer
H	12	M10 x 30 x 2 Flat washers			
I	2	M10 x 40 x 3 flat washers			

Additional equipment/Material needed for fitment :

Qty	Socket set	Qty	Spanner set
	Screw driver set		
	Torque wrench		

Precautions during fitment:

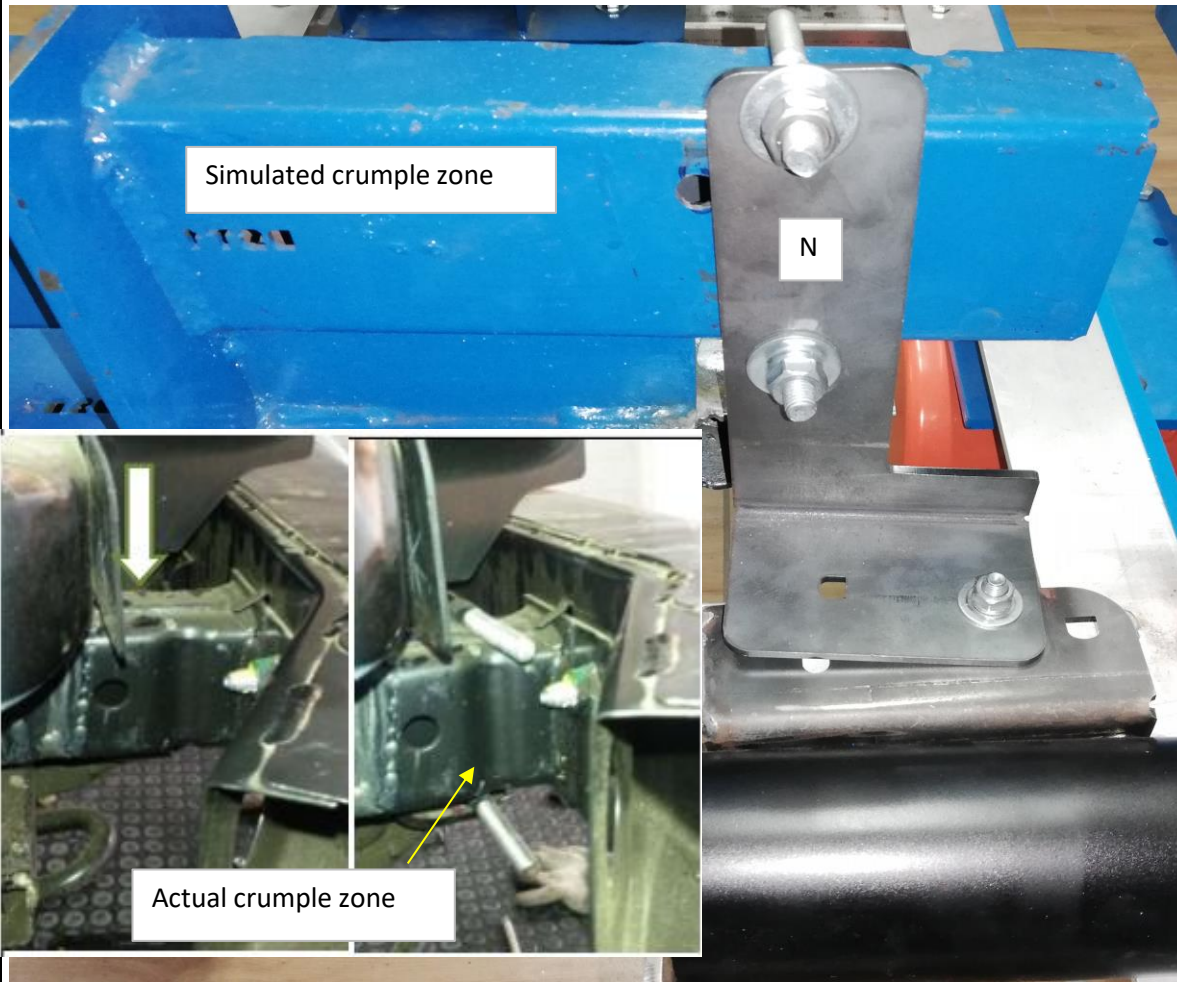
Avoid contact with sharp objects when removing packaging

Directions for use:

Bar must be secure and not hindering the bumper of the vehicle before signing off fitment.

Fitment Instruction: Isuzu nudge

Visual / Graphic Illustration



Step #

Description/Method




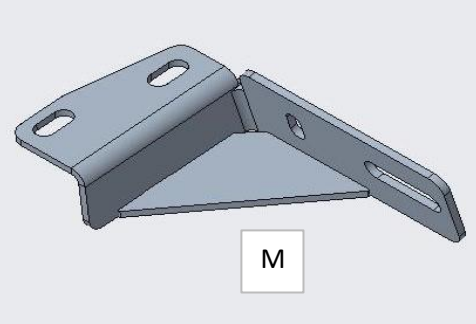
1

Mount bracket N to the outside of the crumple using the fastners provided. Keep the bracket loose.

Fasters needed per side to mount bracket N

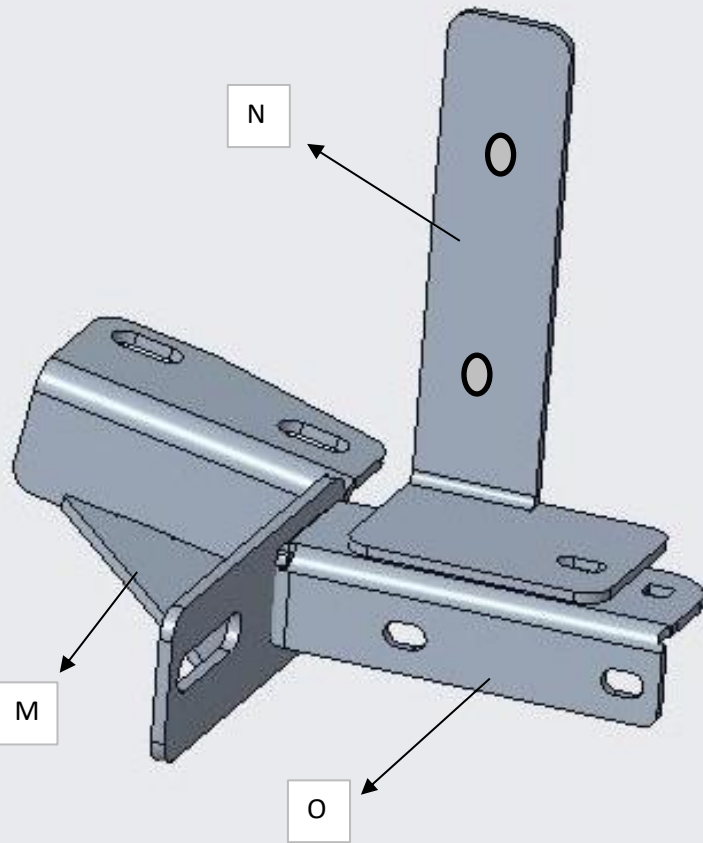
1	Ubolt (L)
2	M10 x 30 x 2 Flat Washers (H)
2	M10 spring washers (F)
2	M10 hex nuts (G)

Fitment Instruction: Isuzu nudge

Visual / Graphic Illustration	Step #	Description/Method
<div style="display: flex; justify-content: space-between;"> <div style="width: 45%;">   </div> <div style="width: 45%; text-align: center;">  <p>P</p> </div> </div> <div style="margin-top: 20px; text-align: center;">  <p>M</p> </div>	2	<p>Mount Bracket M to the under of the Chassis the fine thread bolts provided.</p>
	Fasters needed per side to mount bracket M	
	1	M10 x 40 x 1.25 pitch sets (C)
	1	M10 x 30 x 1.25 pitch sets (D)
	2	M10 x 30 x 2 Flat Washers (H)
	2	M10 Spring Washers (F)

Fitment Instruction: Isuzu Nudge

Visual / Graphic Illustration



Step #

Description/Method

3

Attach bracket O to bracket M and N as shown in the picture.

Fasters needed per side to mount bracket O to M

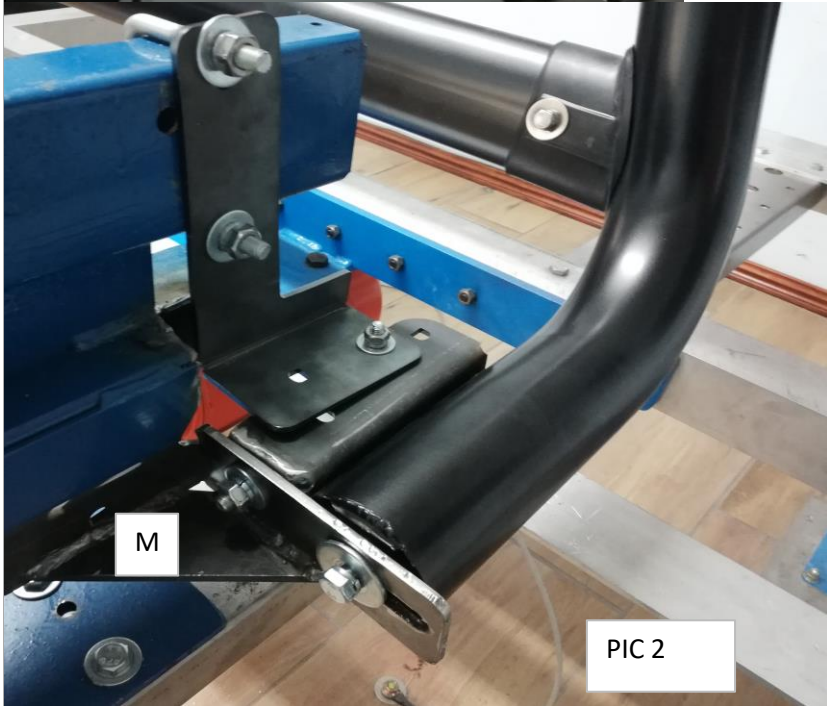
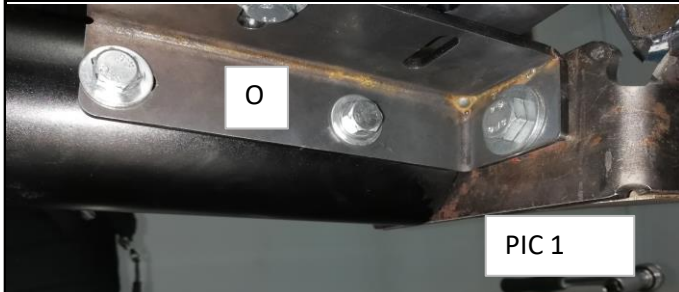
1	M10 x 30 Set (A)
1	M10 Hex Nut (G)
2	M10 x 30 x 2 Flat Washers (H)
1	M10 Spring Washers (F)

Fasters needed per side to mount bracket O to N

1	M8 x 30 Set (B)
1	M8 Hex nut (K)
2	M8 x 22 x 1.6 Flat washer (J)
1	M8 Spring washer (E)

Fitment Instruction: Isuzu Nudge

Visual / Graphic Illustration



Step #

Description/Method

4

Mount Bracket O to the bar as shown in PIC 1 and mount bracket M to the bar as shown in PIC 2

Fasters needed per side to mount bracket O to the Bar

2	M8 x 30 Set (B)
2	M8 Spring washers (E)
2	M8 x 22 x 1.6 Flat washers (J)

Fasters needed per side to mount bracket M to the Bar

1	M10 x 30 Set (A)
1	M10 spring washer (F)
1	M10 x 40 x 3 flat washer (I)

Final step

Make sure bar is centralised and tighten all fasteners to specified torque. M8= 22Nm , M10= 42Nm , M6= 9Nm.

