

ACCESSORY FITMENT INSTRUCTION

Product

Isuzu Dmax Single cab side steps

Part no.

160032T, BS-160032 (Tracking number :
361)



60
Minutes

Models :SCAB

Page 1 of 5

Date :04/03/2020

DIAGRAM



Kit content:

	Qty	Description		Qty	Description
	1	Mild steel bracket marked (PF)	B	16	M8 Spring washers
	1	Mild steel bracket marked (DF)		2	Oval side step
	1	Mild steel bracket marked (PB)			
	1	Mild steel bracket marked (DB)			
A	12	Set Screw - M8x25			
D	12	M8 Hex nuts			
C	24	M8 Flat washers			

Additional equipment/Material needed for fitment :

Qty		Description	Qty		Description
1		13 Socket with Ratchet			
1		13 SPANNER			
1		TORQUE WRENCH			
		Settings : M8 = 22Nm			

Precautions during fitment:

1. Remove standard running board if present before beginning the fitment.
2. Avoid direct contact with sharp objects when removing the packaging.

Directions for use:

1. Have the side steps placed on a rubber mat to avoid any damage during fitment
2. Ensure steps are secure and not hindering the body of the vehicle before signing of the fitment.

Fitment Instruction: Isuzu Dmax Single cab side steps

Visual / Graphic Illustration

Fig 1



Fig 2

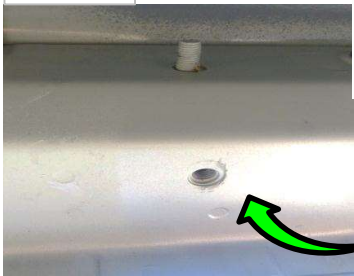


Fig 3

Step #

Description/Method

Step 1

Using the brackets from the kit marked DF, attach it to the body on the points provided and tighten to the specified torque (M8 = 22 Nm).

Refer to Fig 1,2 and 3.

Fitment of brackets for club cab and double cab is the same.

Fitment Instruction: Isuzu Dmax Single cab side steps

Visual / Graphic Illustration

Step #

Description/Method

Fig 4



Step 2

Using the bracket from the kit marked DB, attach it to the body on the points provided and tighten to the specified torque (M8 = 22 Nm).

Refer to Fig 4, 5 and 6.

Fitment of brackets for club cab and double cab is the same.

Fig 5

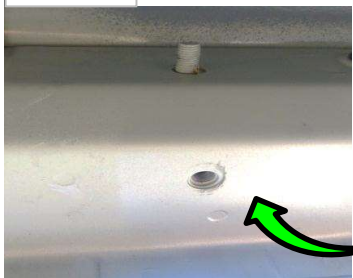
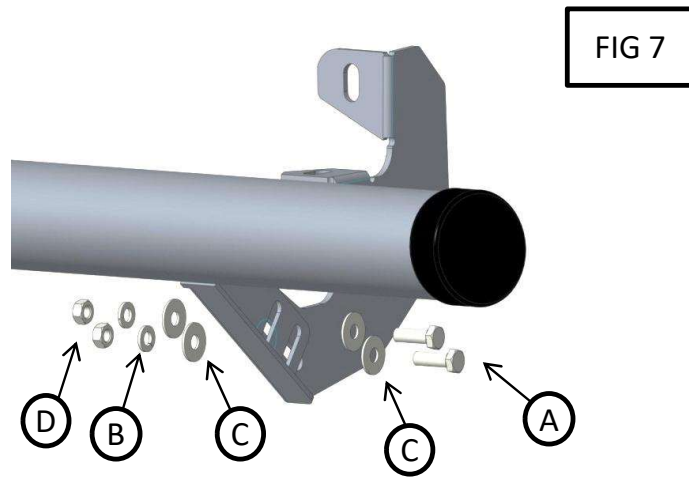


Fig 6

Fitment Instruction: Isuzu Dmax Single cab side steps

Visual / Graphic Illustration



Step #

Description/Method

Step 3

Attach the oval side step to the brackets mounted to the vehicle using the kit (FIG 7).

Final step

Page 5 of 5

Make sure bar is centralised and tighten all fasteners to specified torque. M8= 22Nm , M10= 42Nm , M6= 9Nm.

