

VW Amarok; Model 2012

Roll Bar - PN 250016



FITTING INSTRUCTIONS



60 MINUTES

PART NUMBER

267

SYCORTM
Quality Automotive Accessories

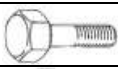






REQUIRED TOOLS

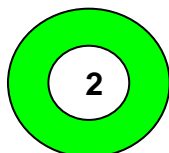
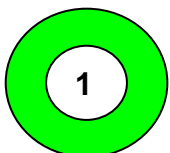
3/8 DRIVE
set



13 SPANNER
17 SPANNER



a		M8X25; 8.8 (EG)	8
b		M8X20X1.6;(EG)	16
c		M8; (EG)	8
d		M8; (EG)	8
e		M10X40X3	4
f		M10	4
g		M10	4



WARRANTY

1. If any product manufactured by SYCOR is found to be defective during a period of twelve (12) months after the date of purchase, SYCOR shall repair (at SYCOR's discretion) the defective product or part.
2. Any defect in a product distributed by SYCOR, but not manufactured by SYCOR, shall be dealt with in accordance with, and to the extent of, the warranty offered by the manufacturer of the product.
3. SYCOR does not warrant that the products manufactured by it comply with the laws of the place where the products are being purchased or used. It is the sole responsibility of the Purchaser to ascertain whether products being purchased – or the affixation of these products to any other object – comply with the local laws.
4. Except to the extent described in this warranty, SYCOR shall not be liable for any other claim, including those claims arising from faulty design, the use of the product on any indirect special or consequential damage or injury to any person, company or any other entity.
5. Modification or alteration to any product manufactured by SYCOR to enable fitment in conjunction with other vehicle accessories or modifications (eg lift kits) will void any warranty claims.

PRECAUTIONS

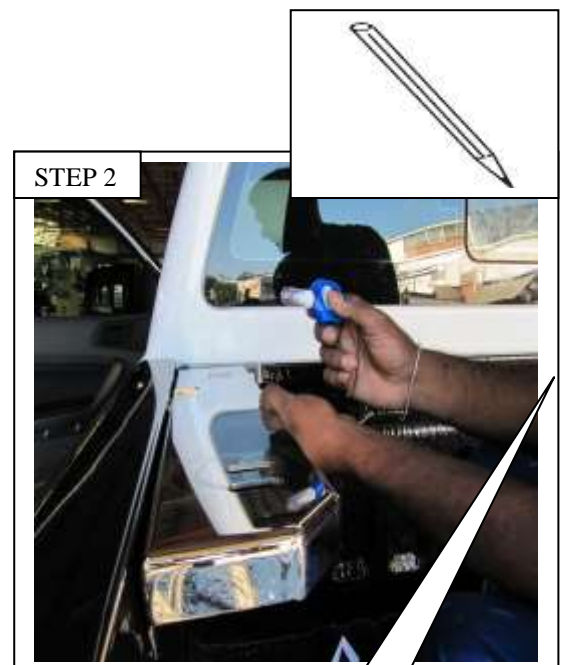
Ensure that your workmanship is of the highest professional standard and that you do not scratch or damage the vehicle or accessory to be fitted.

Before commencing with fitment, carefully unwrap the product and ensure that the kit is complete and that the part is free of damage.

INSTALLATION PROCEDURE

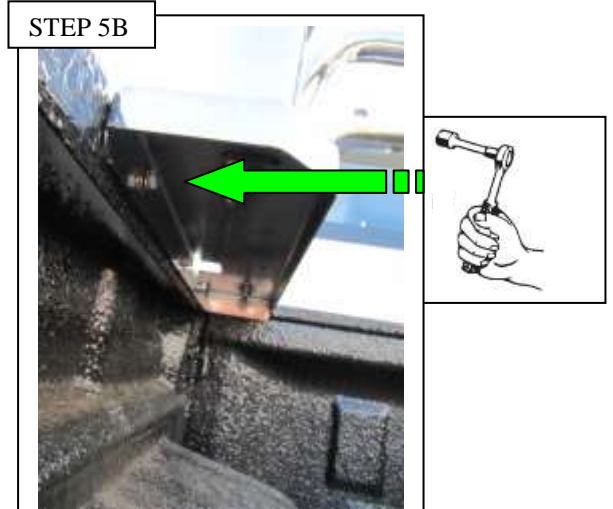
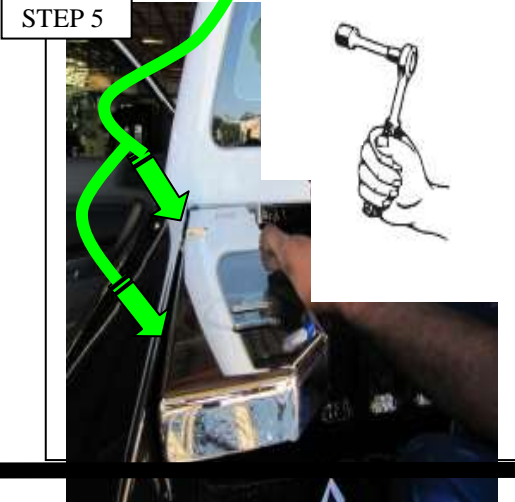
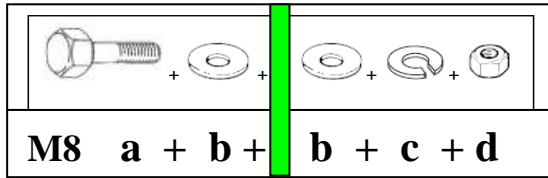
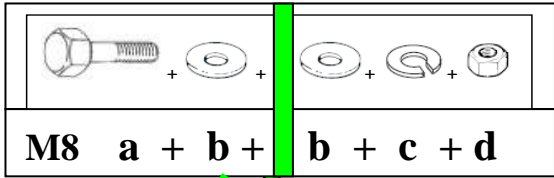
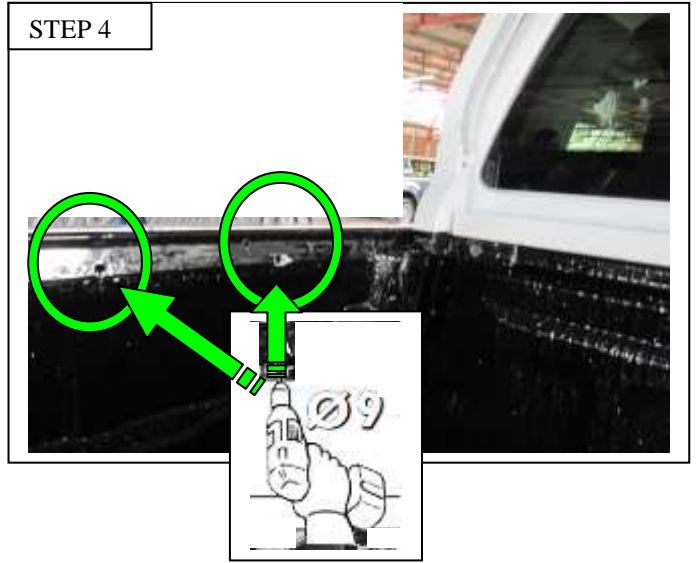
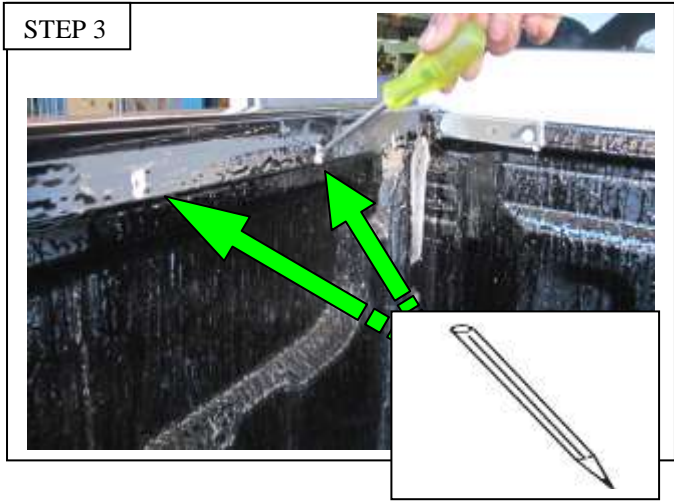


PLACE BASE
PLATE FLUSH TO
SIDE OF BIN
BEFORE
MARKING HOLES
FOR DRILLING



MARK HOLES





STEP 6



PLACE RUBBER ROLL BAR WASHERS ONTO THE BOTTOM OF ROLL BAR BEFORE BOLTING THE ROLL BAR TO THE BASE PLATE. (SEE STEP 7 AND 7A)

