

# ACCESSORY FITMENT

**Product**

NISSAN NAVARA D23 SPORTS BAR STAINLESS

**Part no.**

170045T (Tracking NO : 23)



60  
Minutes

Models :2017

Page 1 of 5

Date : 22/06/2017

DIAGRAM



Kit content:

	Qty	Description		Qty	Description
A	2	M8x90 Sets	L	1	DS 3" Oval Side Tube
B	16	M8x22x1.6 Flat washers	M	1	PS 3" Oval Side Tube
C	8	M8x25 Sets	N	4	Feet rubbers
D	6	M8 Hex nuts	O	2	Middle mount rubbers
E	10	M8 spring washers	P	2	Grommets
F	4	M10 Hex nuts	Q	2	Base plates
G	4	M10 Spring washers			
I	4	M10x40x3 Flat washers			
J	1	Front sports bar			
K	1	Back Sports bar			

Additional equipment/Material needed for fitment :

Qty		Drill and drill bits	Qty		Centre punch
		tectyl			Torque wrench
		Ratchet and sockets			
		Spanner Set			
		Hammer			

Precautions during fitment:

1. Avoid direct contact with sharp objects when removing the packaging.
2. When placing the sports bar in place, ensure not to scratch the base plate.

Directions for use:

1. Have the bar and its assembly pieces placed on a rubber mat to avoid any damage during fitment.
2. Two people are required for this fitment.

**Fitment Instruction:****Navara Sports Bar**

Visual / Graphic Illustration

Step #

Description/Method

FIG 1



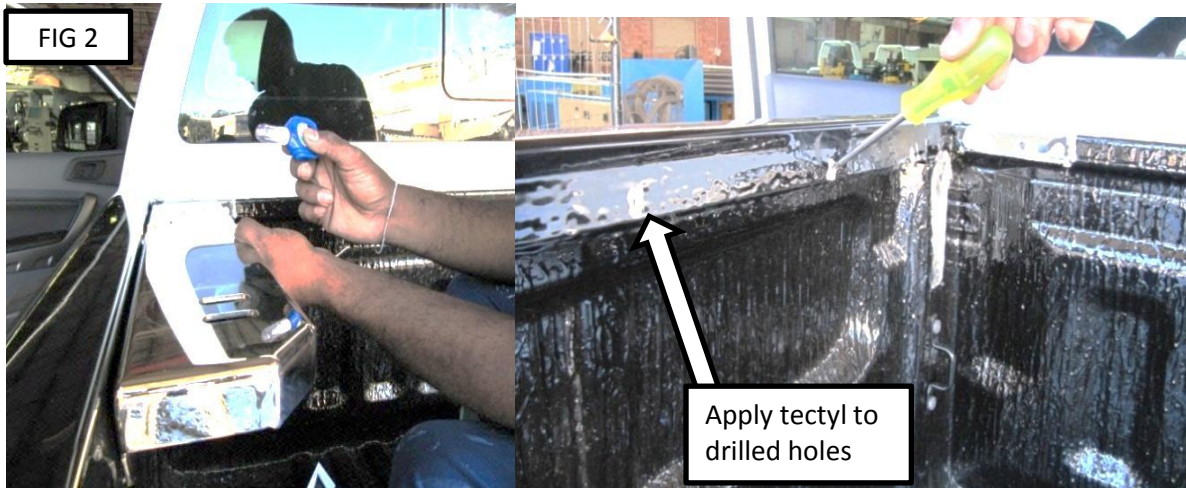
1

You will need to remove a plastic grommet located in the front of the bin. Shown in FIG 1.

2

Place The base plate in the front corner of the bin, so that the holes in the base plate are on the bin side(as shown in fig 2). It would be a good idea to clamp the base plate down, so it does not move for the next step.

FIG 2



3

Once the base plate is clamped, you will need to mark the locations that you will need to drill. You must mark the bin using the centre of the holes on the base plates

4

Centre punch the centre of the mark you made in the previous step to keep it accurate. Once centre punched you must drill through the bin plate using a 9mm drill bit. Apply tectyle to drilled holes.

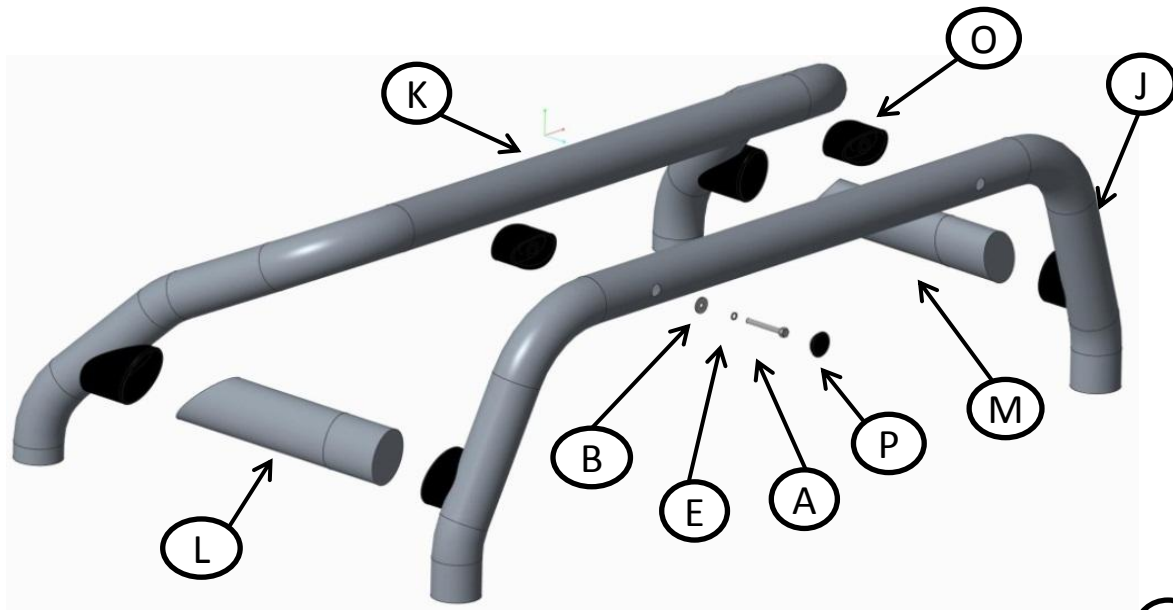
## Fitment Instruction: Navara Sports Bar

Visual / Graphic Illustration

Step #

Description/Method

FIG 4



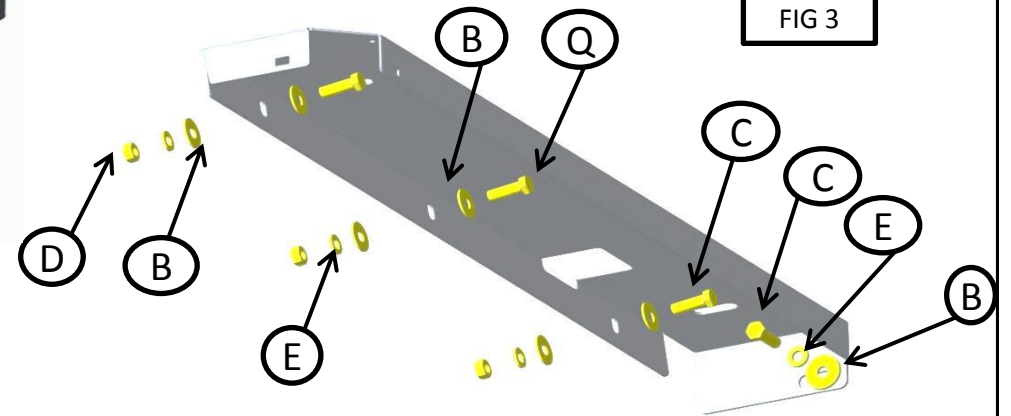
5

You can now bolt the base plates onto the bin using the holes you have just drilled. The required bolts and nuts are shown on FIG 3.

6

Assemble the sports bar as shown in FIG 4.

FIG 3



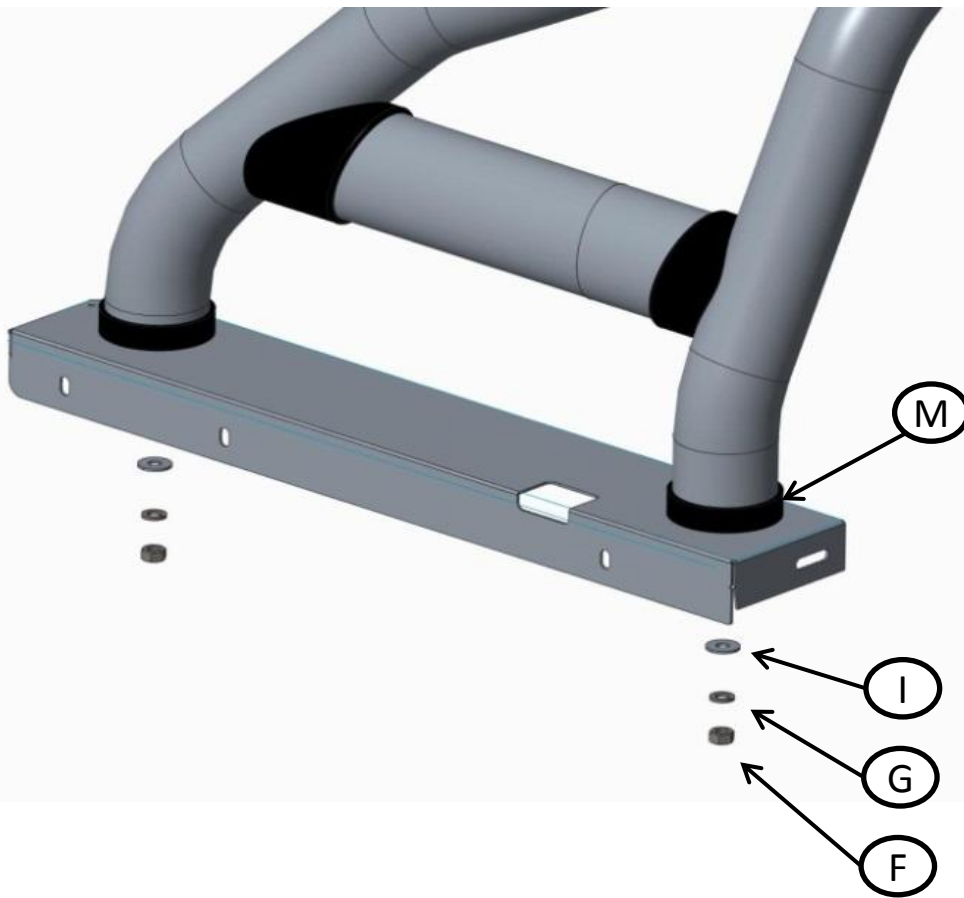
## Fitment Instruction: Navara Sports Bar

Visual / Graphic Illustration

Step #

Description/Method

FIG 5



6

With the base plates mounted and the sports bar assembled. You can now mount the sports bar onto the base plates as shown in FIG 5.

Make sure bar is centralised and tighten all fasteners to specified torque. M8= 22Nm , M10= 42Nm , M6= 9Nm.

