

ACCESSORY FITMENT INSTRUCTION

Product

Kia Sportage Nudge Bar Stainless

Tracking no.

20040T Tracking No. 350

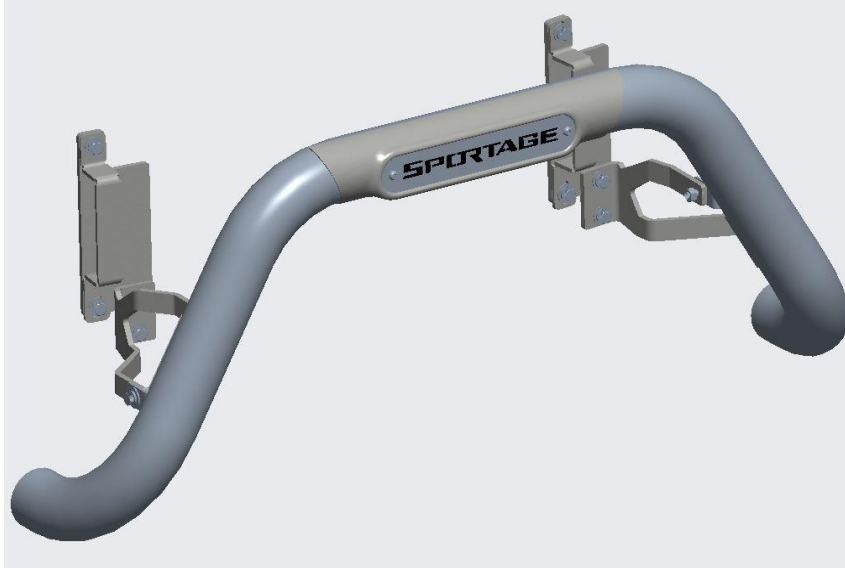


60
Minutes

Models : All

Page 1 of 6

DIAGRAM



Kit content:

	Qty	Description		Qty	Description
A	8	M8 x 25 Sets	H	2	Chassis Mount Bracket
B	8	M8 x 20 x 1.6 Flat Washers	I	2	Clamp Bracket
C	8	M8 Spring Washers	J	1	Bottom Mount Bracket LHS
D	4	M8 x 25 Sets	K	1	Bottom Mount Bracket RHS
E	8	M8 x 20 x 1.6 Flat Washers	L	1	Nudge Bar
F	4	M8 x Spring Washers			
G	4	M8 Hex Nuts			

Additional equipment/Material needed for fitment :

Qty		Qty	
	Ratchet Set		
	Spanner Set		
	Torque Wrench		
	Masking Tape		

Precautions during fitment:

Ensure you have adequate working space. Requires two people for fitment. Ensure that the correct tools and appropriate PPE are used during installation.

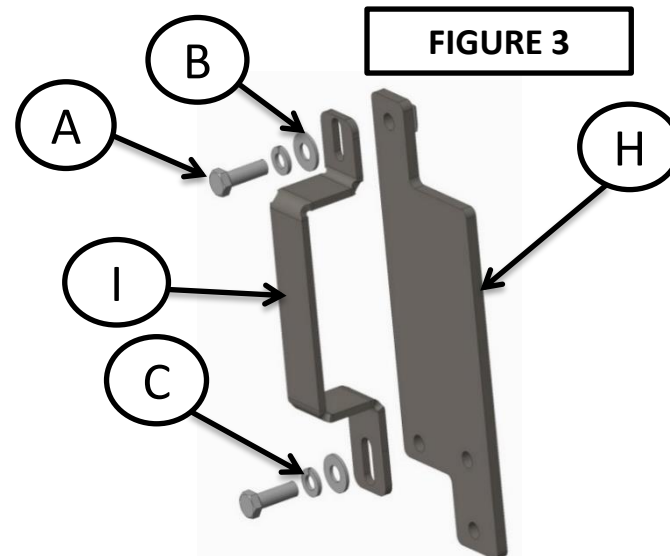
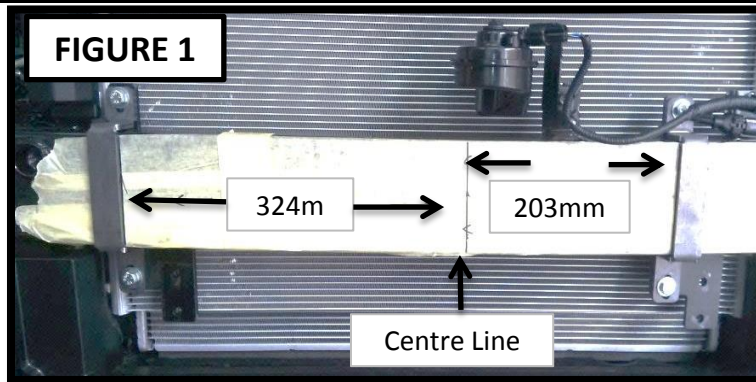
Directions for use:

Please follow all steps shown in this fitting instruction.

Fitment Instruction:

Kia Sportage Nudge Bar Stainless

Visual / Graphic Illustration



Step #

Description/Method

1

The Bumper needs to be removed for this fitment, Remove the bottom cover , then the clips and screws in the wheel arch followed by the top clips and screws inside the bonnet.

2

Figure 1 shows the cross member located behind the Bumper. Find the centre of this cross member as shown. Then Measure 324mm from centre to the edge of the clamp on the driver's side and 203mm from the centre to the edge of the clamp on the passenger side. This will give you the correct width at which to mount the brackets.

3

Once you have the correct width now set the height, the top of the bracket (H) should be 45mm from the top of the cross member as shown in Figure 2. Ensure that there is a minimum of 10mm clearance between the back of the Bracket and the Airconditioner Condenser.

4

Figure 3 shows how the Driver's side clamp is assembled, This will be assembled the same on the passenger's side. Tighten fully to the specified torque.

Fitment Instruction:

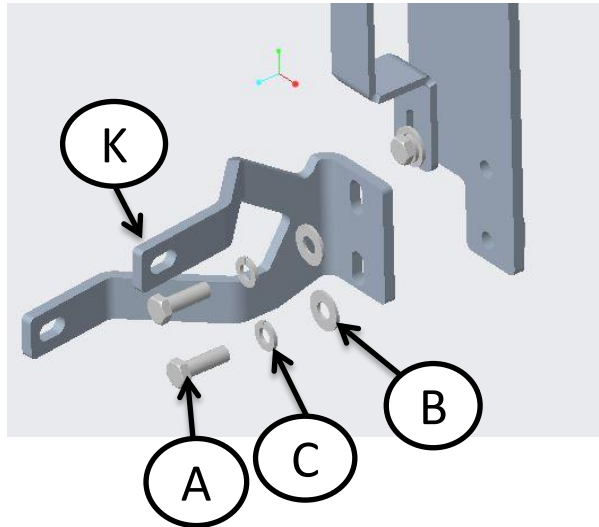
Kia Sportage Nudge Bar Stainless

Visual / Graphic Illustration

Step #

Description/Method

FIGURE 4



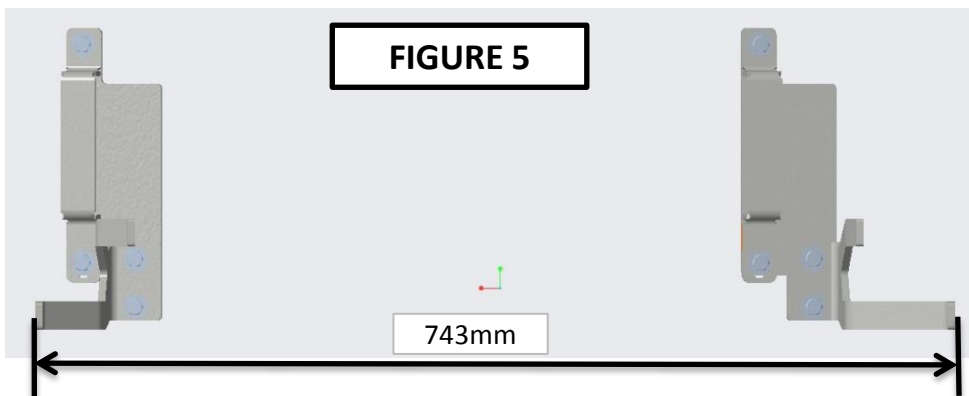
5

Bolt on the bottom bracket as shown in Figure 4.
Note : Driver side shown.

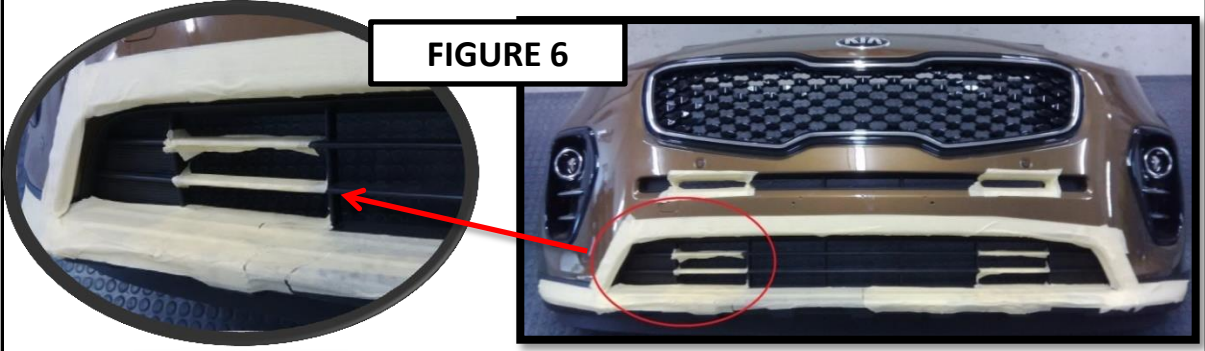

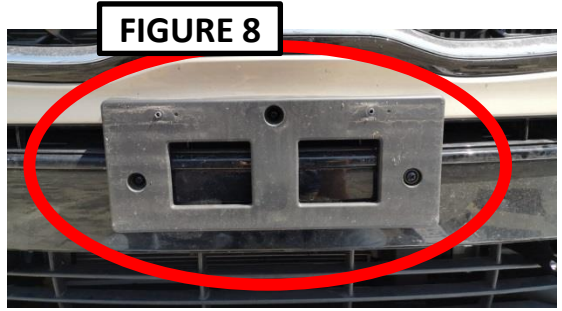

6

You can double check your measurements by checking the outside to outside measurements (Figure 5) this should be 743mm.

FIGURE 5



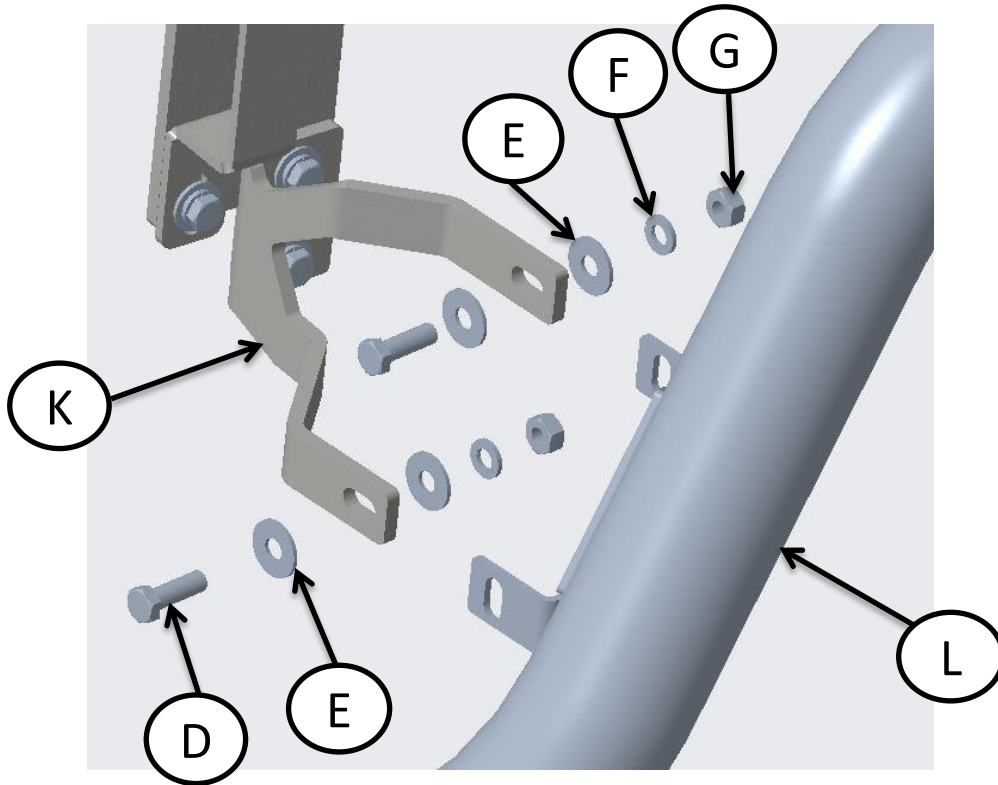
Fitment Instruction: Kia Sportage Nudge Bar Stainless

Visual / Graphic Illustration	Step #	Description/Method
 <p>FIGURE 6</p>	<p>7</p>	<p>With the Bumper removed, apply the masking tape onto the grill for protection against scratches as shown in Figure 6.</p>
 <p>FIGURE 7</p>  <p>FIGURE 8</p>	<p>8</p>	<p>After tightening all the bolts, you can now carefully replace the bumper.</p>
 <p>FIGURE 9</p>	<p>9</p>	<p>Make sure you have enough space between the bracket and grill. (Bracket must not touch the grill) Shown in Figure 7.</p>
		<p>NOTE: If your vehicle is fitted with the number plate holder shown in Fig 8 , remove this holder and refit number plate as shown in Fig 9.</p>

Fitment Instruction:
 Kia Sportage Nudge Bar Stainless

Visual / Graphic Illustration

FIGURE 10



Step #

Description/Method

10

Bolt on Nudge bar as shown in Figure 8.

11

Complete

Final step

Page 6 of 6

Make sure bar is centralised and tighten all fasteners to specified torque.
M6= 9Nm, M8= 22Nm , M10= 42Nm.

