

Pajero Sport; Model 2010 - 2015



FITTING INSTRUCTIONS



60 MINUTES

PART NUMBER

273

Revision I: 06-12-2013



REQUIRED TOOLS

3/8 DRIVE SET


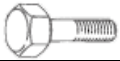










10 SPANNER
13 SPANNER
17 SPANNER



SCREW DRIVER SET



a		M10X20; 8.8 (EG) Metric fine.(1.25)	3
b		M10X20; 8.8 (EG)	1
c		M10X30	4
d		M6X25	2
f		M6; (EG)	2
g		M10; (EG)	8
h		M10; (EG)	3
I		M10X30X2	9
J		M10X40X3	2
K		M6X22X1.6	2
l	U-NUTS	M6	2

WARRANTY

1. If any product manufactured by ARTAV is found to be defective during a period of twelve (12) months after the date of purchase, ARTAV shall repair (at ARTAV's discretion) the defective product or part.
2. Any defect in a product distributed by ARTAV, but not manufactured by ARTAV, shall be dealt with in accordance with, and to the extent of, the warranty offered by the manufacturer of the product.
3. ARTAV does not warrant that the products manufactured by it comply with the laws of the place where the products are being purchased or used. It is the sole responsibility of the Purchaser to ascertain whether products being purchased – or the affixation of these products to any other object – comply with the local laws.
4. Except to the extent described in this warranty, ARTAV shall not be liable for any other claim, including those claims arising from faulty design, the use of the product on any indirect special or consequential damage or injury to any person, company or any other entity.
5. Modification or alteration to any product manufactured by ARTAV to enable fitment in conjunction with other vehicle accessories or modifications (eg lift kits) will void any warranty claims.

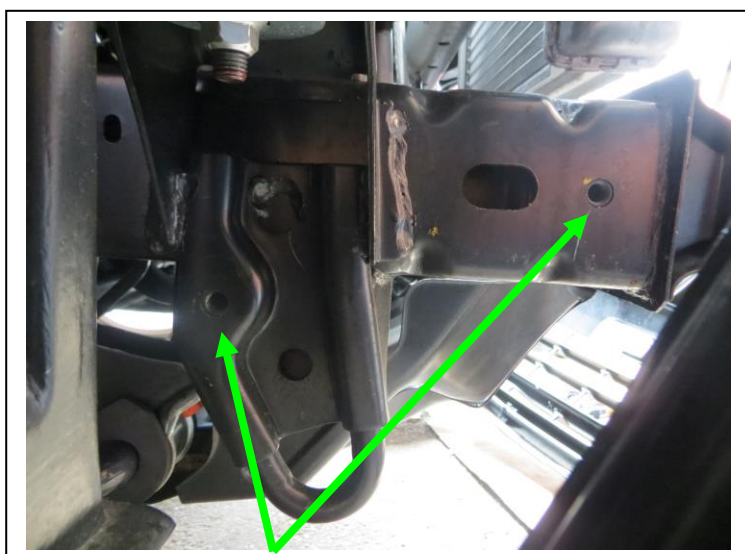
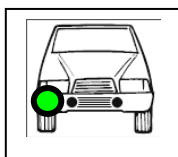
PRECAUTIONS

Ensure that your workmanship is of the highest professional standard and that you do not scratch or damage the vehicle or accessory to be fitted.

Before commencing with fitment, carefully unwrap the product and ensure that the kit is complete and that the part is free of damage.

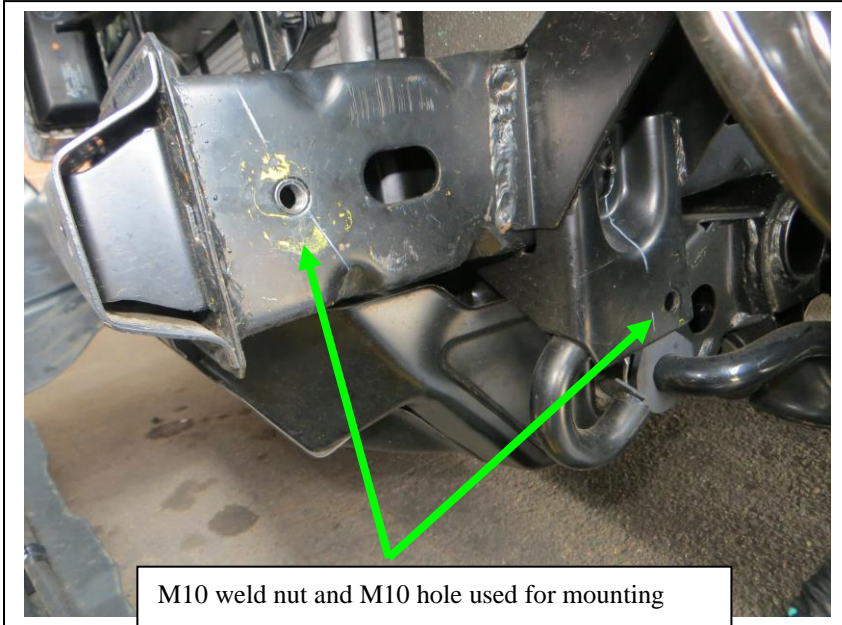
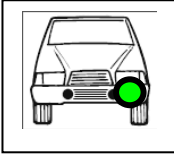
INSTALLATION PROCEDURE

Step 1

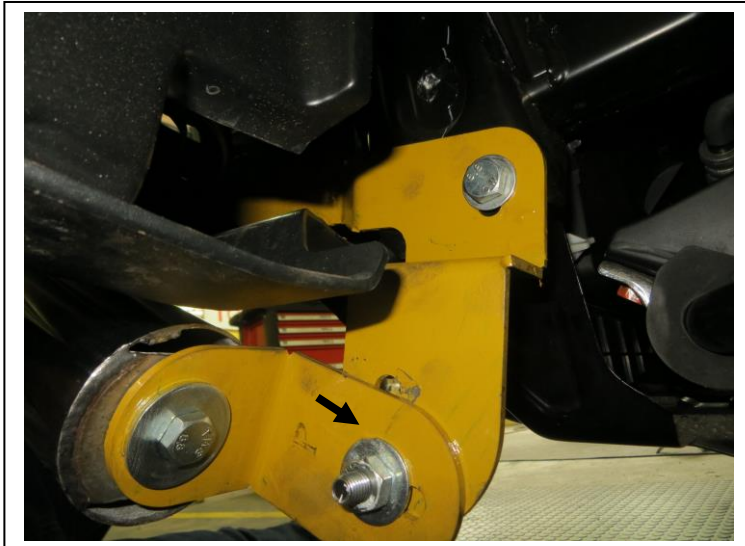


M10 weld nuts used for mounting

Step 2



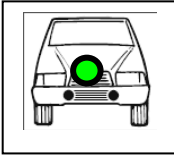
Step 3



You will notice that the 90 degree oval bracket has an arrow on it, this side of the bracket should be attached directly into the main bottom bracket as shown in the picture. The opposite side will be attached to the bar.

Repeat process on driver's side

Step 4



The u-clips are for the number plate

