

ACCESSORY FITMENT

Product

JAC T8 Nudge Bar

Part no.

40010T, BS-40010



60
Minutes

Models : DC - T8

Page 1 of 6

2020/07/08

DIAGRAM



Kit content:

	Qty	Description		Qty	Description
A	2	M12 x 50 x 1.25 Fine Thread sets	N		
B	2	M12 Spring washers	O		
C	2	M12 x 30 x 2.5 Flat washers	P		
D	2	M10 x sets	Q		
E	2	M10 x 40 x x 3 Flat washers	R		
F	2	M10 Spring Washers			
G	4	M8 x 30 set screws			
H	8	M8 x 22 x 1.6 Flat Washers			
I	4	M8 Spring washers			
J	6	M8 Hex Nuts			
K	2	M8 x 25 set screws			
L	4	M8 x 20 x 1.6 Flat Washers			
M	2	M8 Spring Washers			

Additional equipment/Material needed for fitment :

Qty		Qty	
	Spanner Set		Stanley Knife
	Screw driver Set		Torque wrench
	Socket Set		

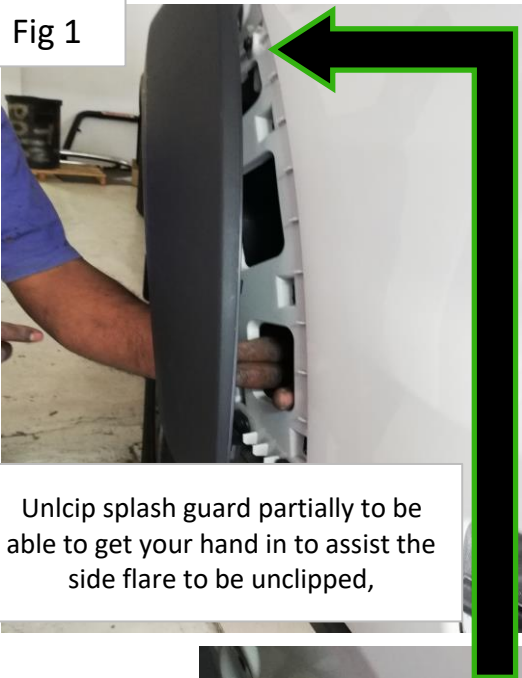
Precautions during fitment:

Ensure you have an adequate working space. Requires two people for fitment. Ensure that the correct tools and appropriate PPE are used with installation.

Fitment Instruction: JAC T8 Nudge Bar Black

Visual / Graphic Illustration

Fig 1



Unclip splash guard partially to be able to get your hand in to assist the side flare to be unclipped,

Fig 2



Fig 3



Fig 4




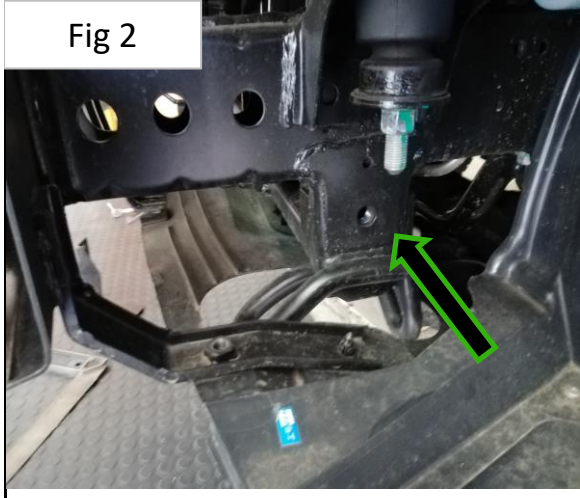
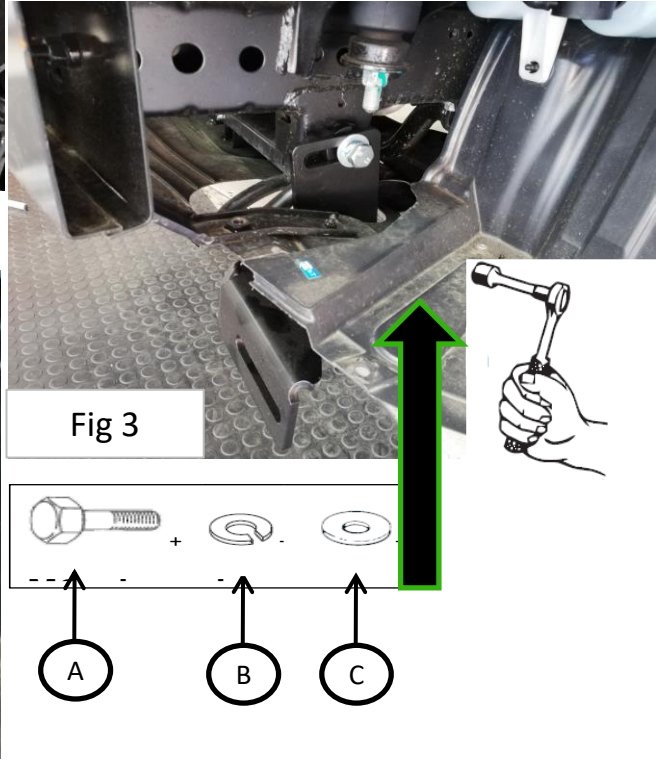
Step #

Description/Method



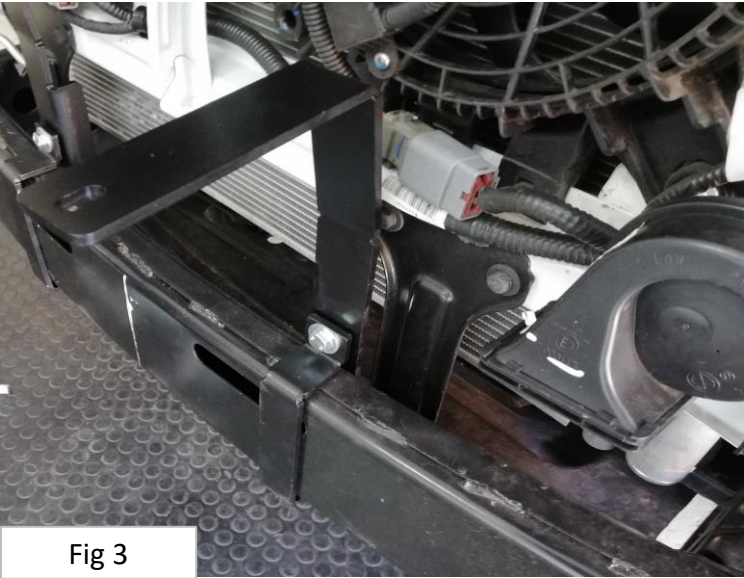
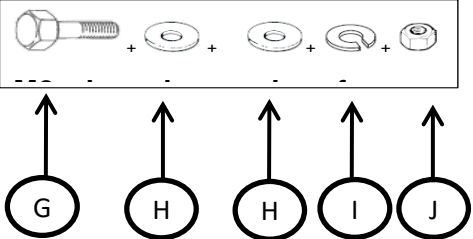
1

Remove bumper, begin with side flares as shown in Fig 1.
1.
Remove the screws from the sides of the bumper as shown in Fig 2. (Repeat Fig 1 and Fig 2 on Passenger side)
Then proceed to remove the top cover as shown in Fig 3 and Fig 4.
Finally unscrew the bumper at the top and the bottom. Place bumper carefully on a soft surface to avoid damage.

Fitment Instruction: JAC T8 Nudge Bar Black

Visual / Graphic Illustration	Step #	Description/Method
<p>Fig 1</p> 	<p>2</p>	<p>Locate the weld nut on the side of the chassis as shown in Fig 2</p>
<p>Fig 2</p> 	<p>3</p>	<p>Mount the bottom bracket on the side of the chassis as shown in Fig 3.</p>
<p>Fig 3</p> 	<p>4</p>	<p>Repeat steps 2 and 3 on the Driver's side.</p>

Fitment Instruction: JAC T8 Nudge Bar Black

Visual / Graphic Illustration	Step #	Description/Method
 <p>Fig 1</p>	5	<p>Using the end of the slam track as reference, measure 372mm and this will be where the outside of the saddle bracket will mount. As shown in Fig 1</p>
 <p>Fig 2</p>	6	<p>Mount the top bracket onto the slam track using the saddle bracket and the fasteners provided.</p>
 <p>Fig 3</p> <div style="text-align: center; margin-top: 10px;">  </div>	7	<p>Secure the bracket in place then double check that it measures 372mm from the end of the slam track to the outside of the saddle bracket. Repeat steps 5 and 6 on the Driver's side.</p>

Fitment Instruction:
JAC T8 Nudge Bar Black

Visual / Graphic Illustration



Step #

Description/Method

8

Refit the bumper back. Take note of the exit points for the top bracket in relation to the badge.

Final step

Make sure bar is centralised and tighten all fasteners to specified torque.
M8= 22Nm , M10= 42Nm , M6= 9Nm.



Using the fasteners provided mount the nudge onto the 4 protruding brackets. Fig 1 is the bolts used for the top brackets and Fig 2 is the set used for the bottom brackets.

Fig 1

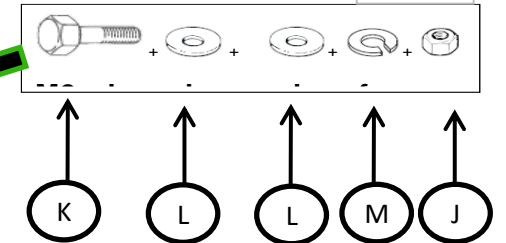


Fig 2

