

ACCESSORY FITMENT INSTRUCTION

Product

Peugeot Landtrek 2021 Nudge Bar Stainless/Black

Part no.



60
Minutes

Models : 2021

Page 1 of 6

Date : 06-10-2021

DIAGRAM



Kit content:

	Qty	Description		Qty	Description
A	4	M8 x 25 Set Screws	I	2	1 x DS and 1 x PS Mounting Bracket
B	4	M8 x 22 x 1.6 Flatwashers	J	1	Nudge Bar
C	4	M8 Springwashers	K		
D	4	M10 x 90 Set Screws	L		
E	10	M10 x 40 x 3 Flatwashers	M		
F	6	M10 Springwasher	N		
G	2	M10 x 30 Set Screws	O		
H	4	M10 Hex Nuts	P		

Additional equipment/Material needed for fitment :

Qty		Spanner Set		Masking Tape
		Screw Driver Set		
		Torque Wrench		
		Ratche Set		

Precautions during fitment:

Do not cause any damage to vehicle. Apply Masking Tape to the front bumper to prevent any scratches. Requires two people to fit. Ensure that you are wearing the appropriate PPE during fitment.

Directions for use:

Read all instructions carefully before installation.

Fitment Instruction: Nudge Bar

Visual / Graphic Illustration

Fig 1

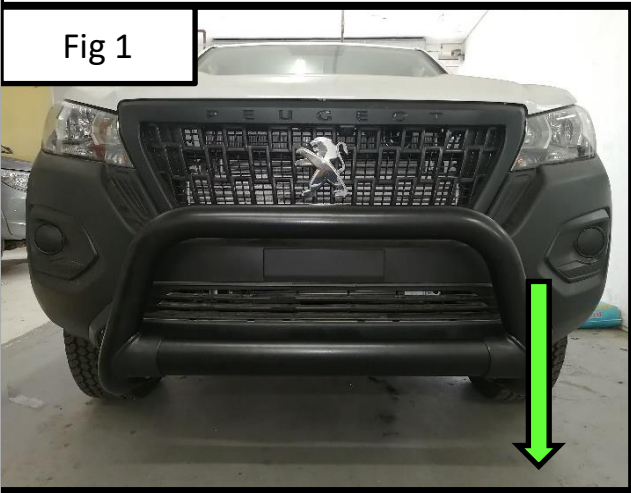
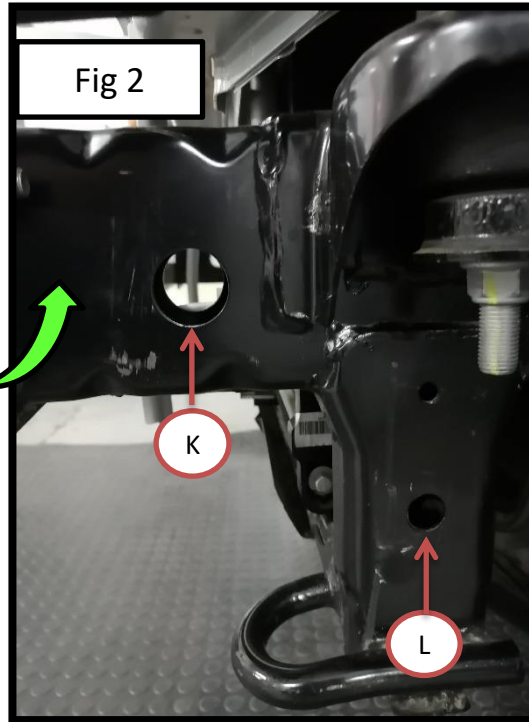


Fig 2



Step #

Description/Method

1

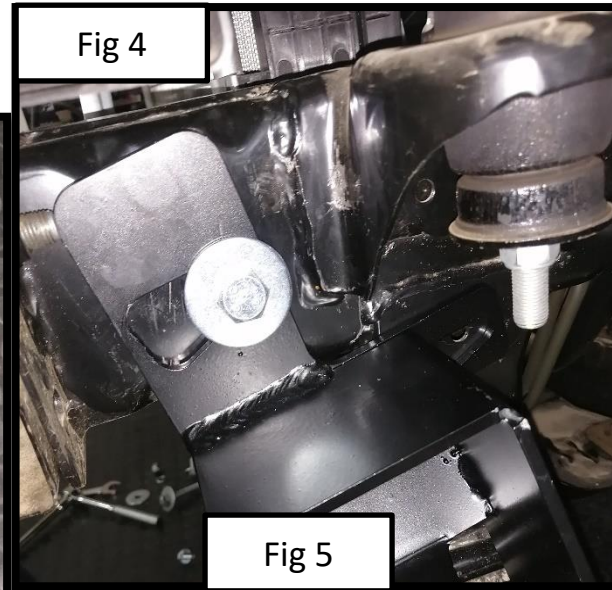
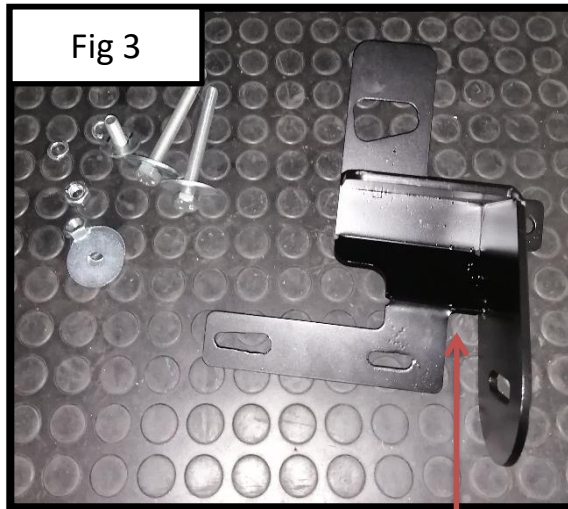
Locate the mounting holes for the Nudge Bracket as shown in Fig 1 and 2.

Fitment Instruction: Nudge Bar

Visual / Graphic Illustration

Step #

Description/Method



I

D

E

E

F

H

2

Once mounting holes have been located, install the mounting bracket provided in the kit as shown in Fig 4 and 5 using the M10 x 90 Set Screw, M10 x 40 x 3 Flatwasher and M10 Springwasher. Do not tighten fully.

3

Do the same to the Driver Side.

Fitment Instruction: Nudge Bar

Visual / Graphic Illustration

Step #

Description/Method

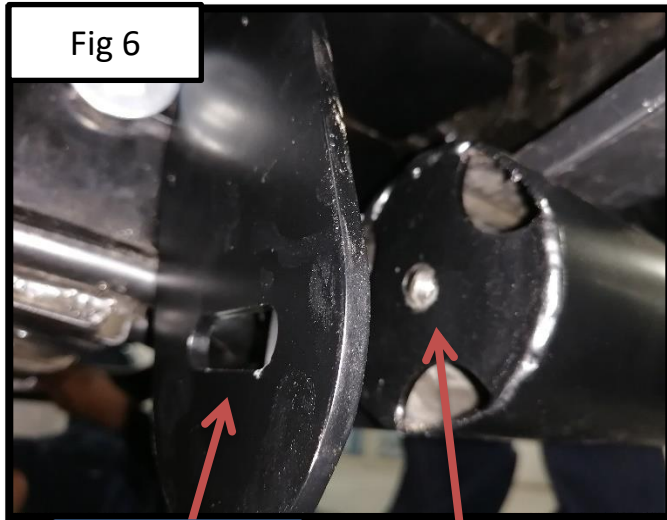


Fig 6



Fig 8

Mounting
Bracket

Nudge Bar

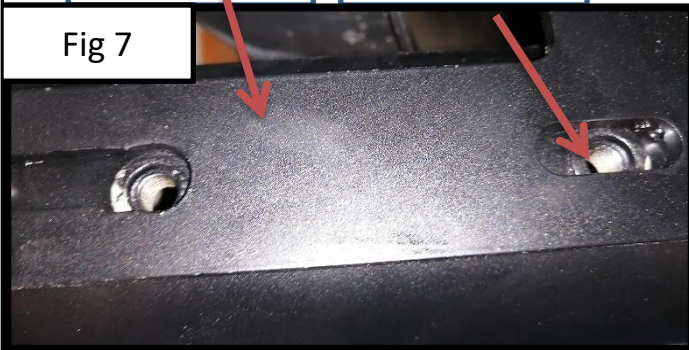


Fig 7

4

Once Mounting Brackets have been fitted, a second person is required to hold the provided Nudge Bar up whilst the person fitting needs to line up the holes on the Nudge Bar with the holes on the Mounting Brackets as Shown in Fig 6, 7 and 8. The Nudge bar will need to be properly tightened.

Fitment Instruction:
Nudge Bar

Visual / Graphic Illustration



Step #

Description/Method

5

Once the Nudge Bar has been correctly placed, you will need to tighten the Hex Nuts to ensure the Nudge is fixed in the correct position.

Final step

Page 6 of 6

Make sure bar is centralised and tighten all fasteners to specified torque. M8= 22Nm , M10= 42Nm , M6= 9Nm.

