

# ACCESSORY FITMENT INSTRUCTION

**Product**

Haval H6 2021 Facelift Side Bars Stainless

**Part no.**

710022T



60  
Minutes

Models : 2021

Page 1 of 5

Date : 22/07/2021

DIAGRAM



**Kit content:**

	Qty	Description		Qty	Description
A	2	Side Bars (DS & PS)	H	8	M10 Flat Washer (ø30 x 2mm THK)
B	2	Front Mount Brackets (DS & PS)	I	8	M10 Spring Washer
C	2	Rear Mount Brackets (DS & PS)	J	8	M10 Hex Nut
D	8	M8 x 25 Set Screw	K	8	M10 T Bolt
E	16	M8 x 22 FW (ø16 x 1.6mm THK)	L	8	Velamoid
F	8	M8 Spring Washer MS			
G	8	M8 Hex Nut			

**Additional equipment/Material needed for fitment :**

Qty		Qty	
	Ratchet and Socket Set		
	Spanner Set		
	Masking Tape		

**Precautions during fitment:**

Wear the appropriate PPE clothing during installation.

Do not cause any damage to the Vehicle.

**Directions for use:**

Apply masking tape onto vehicle to prevent scratches before installation.

Follow all instructions carefully.

## Fitment Instruction: Haval H6 2021 Facelift Side Bars Stainless

Visual / Graphic Illustration

Step #

Description/Method

Figure 1



1

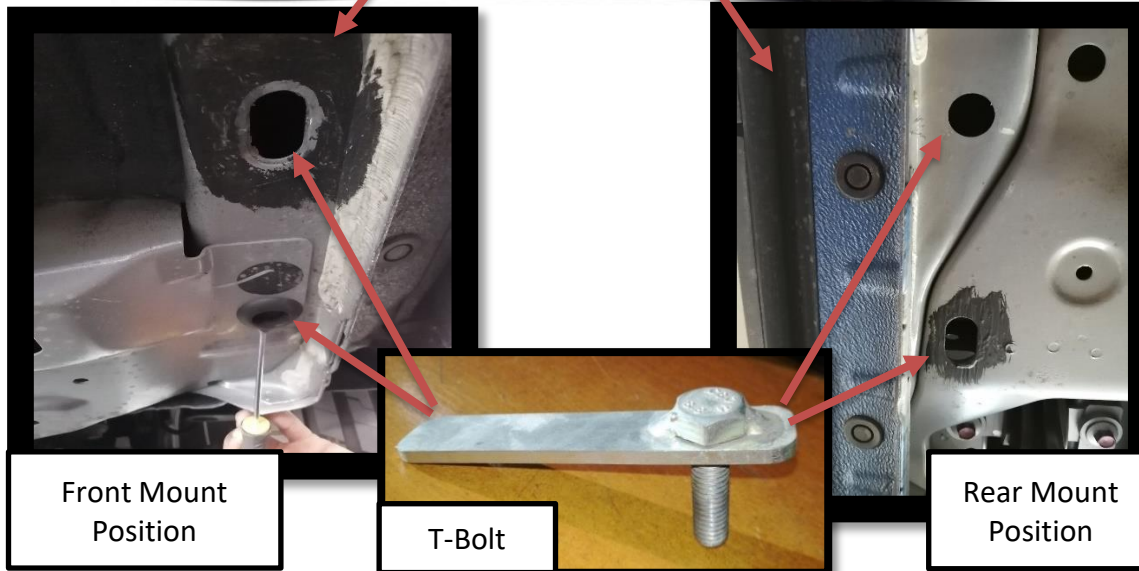
**Locate the Mounting Positions  
as Shown in Figure 1**

2

**Remove plastic cover and insert  
the T-Bolts provided in the kit  
into the holes as shown in Figure  
1.  
(Note Driver side shown)**

3

**Do the same to the other side of  
the vehicle.**

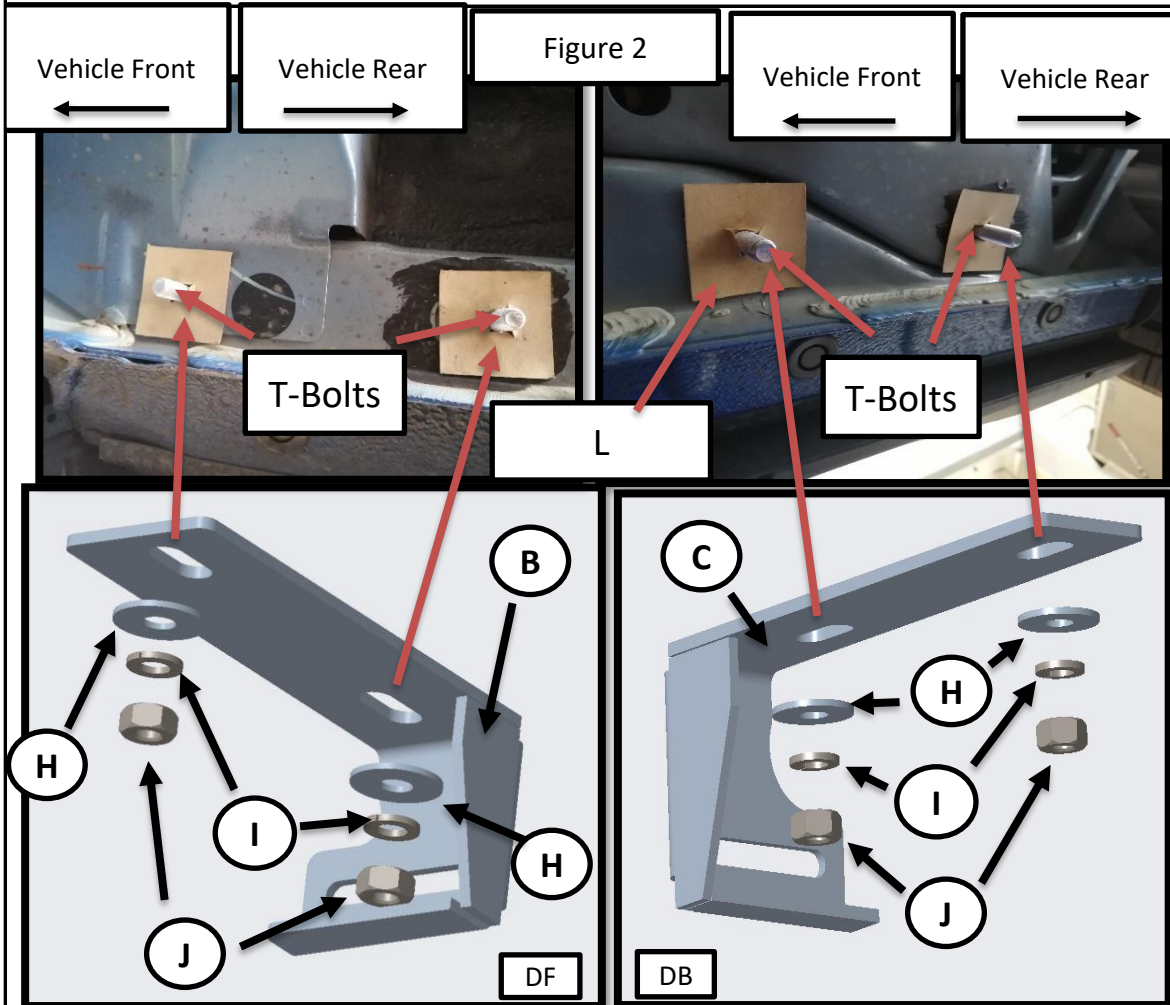
Front Mount  
Position

T-Bolt

Rear Mount  
Position

## Fitment Instruction: Haval H6 2021 Facelift Side Bars Stainless

Visual / Graphic Illustration



Step #

Description/Method

4

**Fit the Front Mount Brackets (Marked F) to the front passenger side of the vehicle as shown in figure 2.**

5

**Fit the Rear Mount Brackets (Marked B) to the rear driver side of the vehicle as shown in figure 2.**

6

**Do the same to the other side of the vehicle.**

**Fitment Instruction:**

## Haval H6 2021 Facelift Side Bars Stainless

Visual / Graphic Illustration

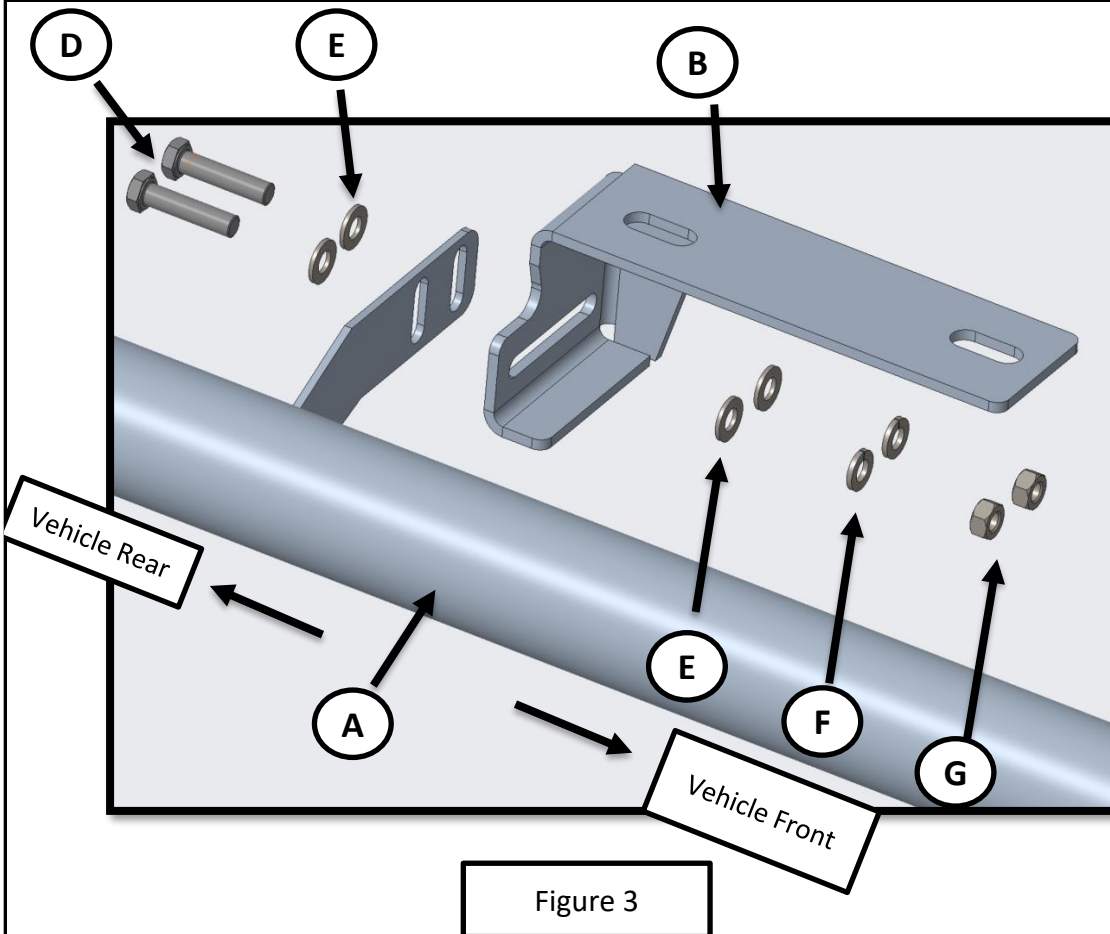
Step #

Description/Method

7

**Fit the Side Bar as shown in Figure 3 . (Note: Driver Side shown)**

8

**Do the same to the other side.**

## Final step

Page 5 of 5

Make sure bar is centralised and tighten all fasteners to specified torque.  
M8= 22Nm , M10= 42Nm , M6= 9Nm.

