

ACCESSORY FITMENT INSTRUCTION

Product

Isuzu D max 2022 Side Steps Single Cab Stainless/Black

Part no.

1600097T/BS-1600097T T/N 452



60
Minutes

Models : 2022

Page 1 of 5

Date : 24/05/2022

DIAGRAM

Kit content:

	Qty	Description		Qty	Description
	1	Mild Steel bracket marked (PF)	B	16	M8 Spring Washers
	1	Mild Steel bracket marked (DF)		2	Oval Side Step
	1	Mild Steel Bracket Marked PB)			
	1	Mild Steel Bracket Marked DB)			
A	14	Set Screw - M8x25			
D	2	M8 Hex nuts			
C	16	M8 Flat Washer			

Additional equipment/Material needed for fitment :

Qty		Description	Qty		Description
	1	13 Socket with Ratchet			
	1	13 Spanner			
	1	Torque Wrench			
		Settings: M8 = 22Nm			

Precautions during fitment:

1. Remove standard running board if present before beginning the fitment.
2. Avoid direct contact with sharp objects when removing the packaging.

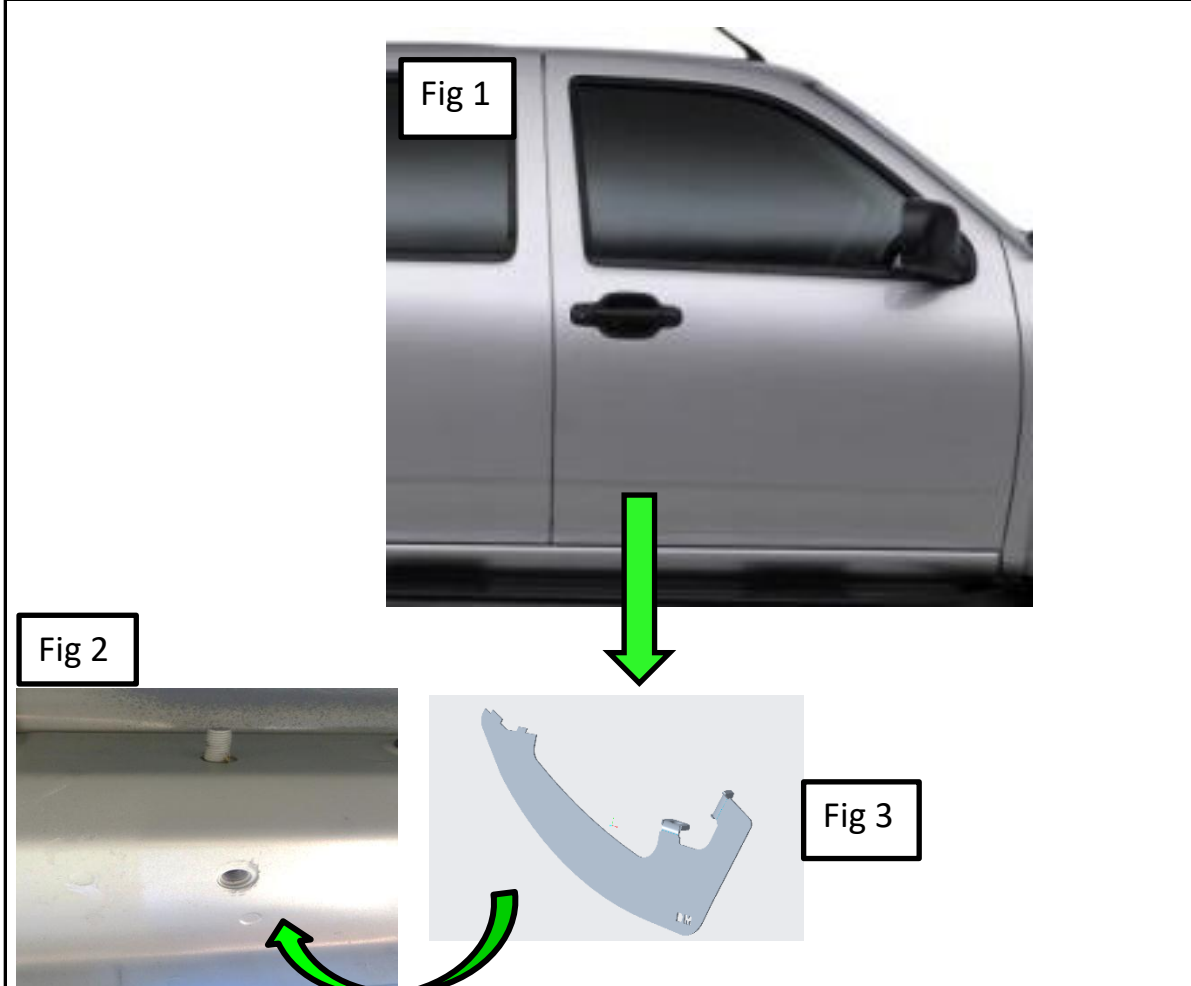
Directions for use:

1. Have the side steps placed on a rubber mat to avoid any damage during fitment
2. Ensure steps are secure and not hindering the body of the vehicle before signing of the fitment.



Fitment Instruction:

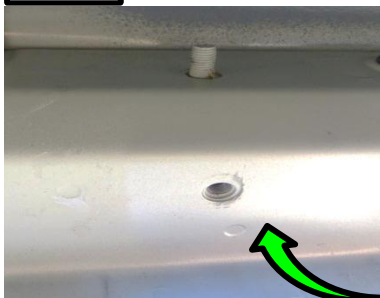
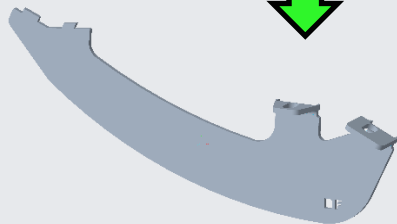
Isuzu D Max Side steps

Visual / Graphic Illustration		Step #	Description/Method
 <p>Fig 1</p> <p>Fig 2</p> <p>Fig 3</p>		Step 1	Using the brackets from the kit marked DB, attach it to the body on the points provided and tighten to the specified torque (M8 = 22 Nm). Refer to Fig 1,2 and 3.
			Fitment of brackets for club cab and double cab is the same.

Fitment Instruction:

Isuzu D max side steps

Visual / Graphic Illustration

Fig 4**Fig 5****Fig 6**

Step

Description/Method

Step 2

Using the bracket from the kit marked DF, attach it to the body on the point provided and tighten to the specified torque (M8 = 22 Nm).
Refer to Fig 4, 5 and 6.

Fitment of brackets for club cab and double cab is the same.

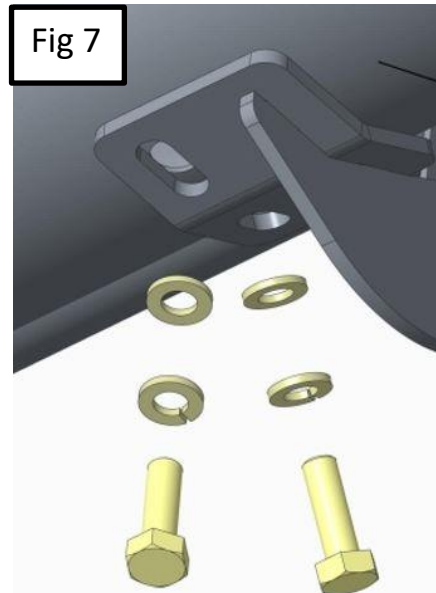
Fitment Instruction:

Isuzu D max side steps

Visual / Graphic Illustration

Step #

Description/Method



Bolts and washers needed per bracket

2	M8x25 Bolts (Black)
2	M8x22x1.6 Flat Washers (Black)
2	M8 Spring Washers (Black)

Step 3

Attach the side step to the brackets mounted to the vehicle using the kit (FIG 7).

Final step

Page 5 of 5

Make sure bar is centralised and tighten all fasteners to specified torque. M8= 22Nm , M10= 42Nm , M6= 9Nm.

